

C-Soft Firmware Upgrade Using TI Downloader

Tools Required:

- PC with either USB or Serial COM ports
- TI Downloader Program
- C-Soft firmware HEX file version 2.1
- Power Supply
- Interface Cable
- Instrument

Important Note: Do not supply power to the unit until all electrical connections are completed.

1. Download & save the TI Downloader program zipped folder to your desktop, www.turnerdesigns.com/software/sbac018c.zip
2. Extract the contents of this folder to your desktop
3. Click the setup button located in this folder to install the TI Downloader program. **Note: installation may take 3-5 minutes**
4. Download & save the C-Soft Hex file version 2.1 zipped folder to your desktop, <http://www.turnerdesigns.com/t2/sw/main.html>
5. Extract the contents of this folder to your desktop
6. Connect instrument's interface cable (RS-232) serial end to the PC serial connection port (A Serial to USB cable is required for USB COM connections)
7. Connect instrument's interface cable to the instrument's 8-pin connector
8. Connect instrument's interface cable power to a power source to supply power to the instrument

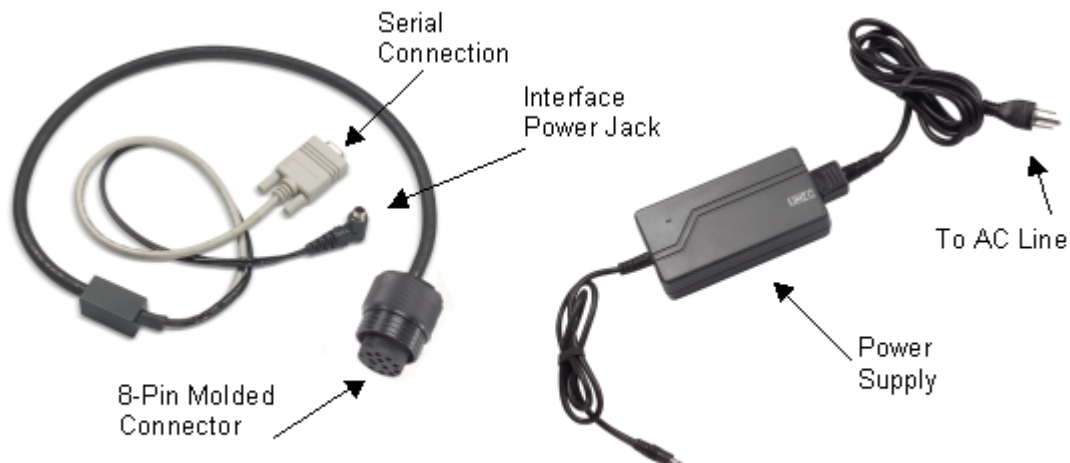


Figure 1

9. Double click **“TI downloader”** icon to open TI downloader program
10. The **“Open file”** window will automatically be displayed (Figure 2)

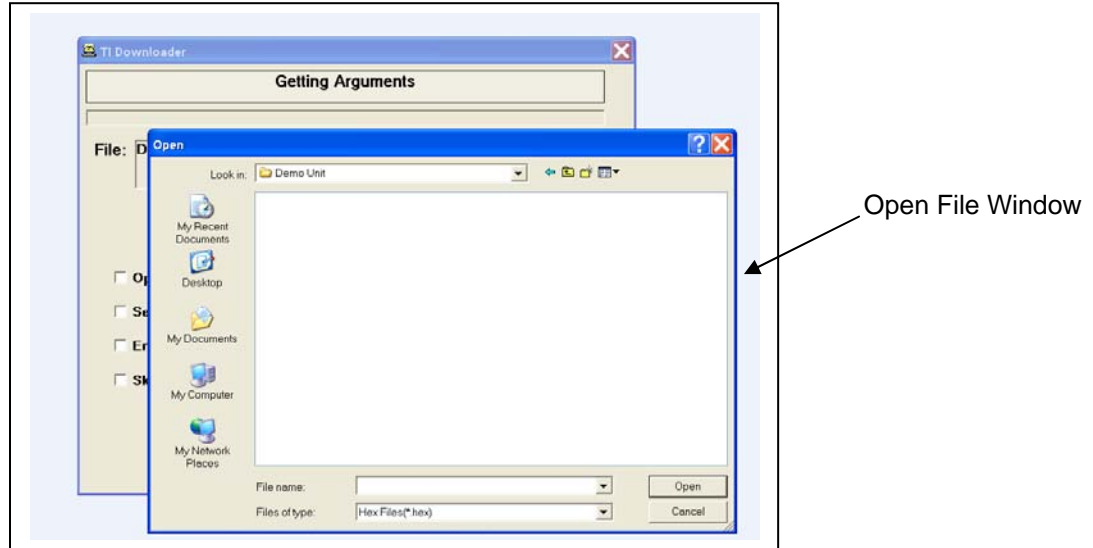


Figure 2

11. Find the folder which contains the C-Soft Hex file version 2.1, then double click to choose the **“HEX file”**



12. If a wrong file is chosen or a change needs to be made after choosing a file, click the **“Change File”** button located on the TI Downloader window (Fig. 3) to change the HEX file

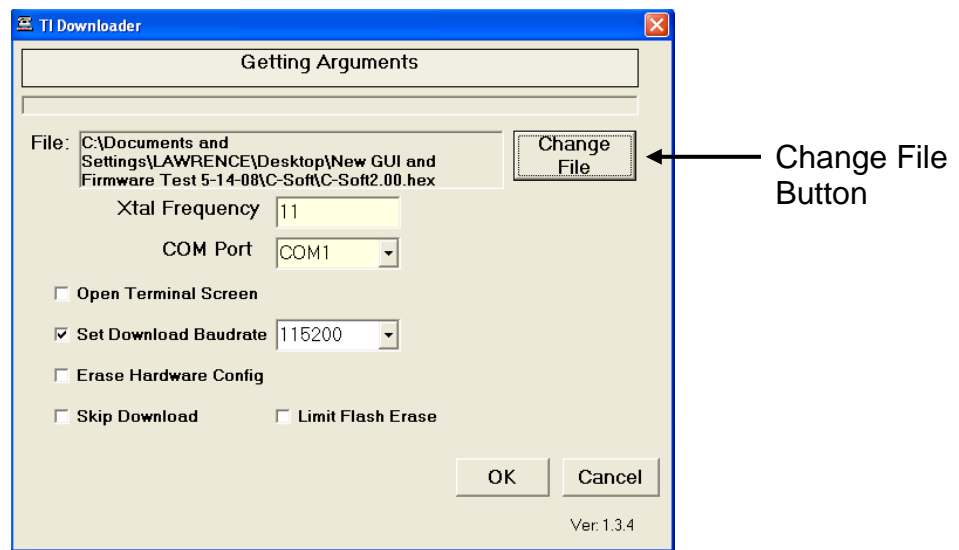


Figure 3



13. "Xtal Frequency" should be set at 11
14. Select the "COM port" being used to connect to the instrument
15. Click the "Set Download Baudrate" box and select a baud rate of **115200** from the pulldown menu
16. Click "OK" to upload firmware (*upload may take 3-5 minutes*)
17. A scrolling bar will indicate upload progress. When upload is complete users may proceed with Software installation and/or instrument operation

*If you are having difficulty uploading firmware to your instrument please contact our technical specialist at 877-316-8049 or support@turnerdesigns.com.