

algaewatch™

Turner Designs Algae Monitor

Operation Manual (998-6050)

March 31, 2010
Revision 1.1



Reliable Instruments for an Unreliable World
845 W. Maude Ave. Telephone 408-749-0994
Sunnyvale, CA 94085 Toll Free 877-316-8049
www.turnerdesigns.com Fax 408-749-0998

To ensure proper system operation, Turner Designs strongly recommends reading this manual in full. After reading the entire manual, please review the following:

INSTALLATION:	Prior to installation, completely review the Pre-installation/ Installation Checklist located in Appendix B.
START-UP:	Prior to start-up, completely review the Start-Up Section located on page 5.
CALIBRATION:	Prior to calibrating the AlgaeWatch , completely review the Calibration Procedure located on page 10.
TROUBLESHOOTING:	Prior to calling Turner Designs for assistance, completely review the Troubleshooting Guide located on page 22.

TABLE OF CONTENTS

INTRODUCTION	1
THEORY OF OPERATION	1
Data Interpretation.....	2
SPECIFICATIONS	3
INSTALLATION	3
Pre-Installation/Installation.....	3
Power & Utilities Required.....	3
Required Tools & Accessories.....	3
Location & Sampling Point.....	3
Mechanical Connections	4
Electrical Connections	4
START-UP	5
Start-Up Procedure.....	5
Monitoring Mode.....	6
CALIBRATION	10
Calibration Procedure.....	10
Notes on Calibrating	11
Calibration Data Screen	12
Table 1. Calibration Data.....	12
INTERNAL DATA LOGGER	13
Parameters.....	13
Software Installation	13
Running IDL Software	14
Examining Downloaded Data	15
PREVENTATIVE MAINTENANCE	16
Cleaning Basket Strainer.....	16
Calibrating	16
Cleaning Flowcell	17
Biofouling	17
Replacement Parts.....	17
ALARMS	18
Alarm Delay.....	18
Alarm Activation	18
Multiple Alarms.....	18
Alarm History.....	18

Notes About Alarms	18
Definitions	19
TROUBLESHOOTING	20
Diagnostics	20
Troubleshooting Guide	22
Service Assistance/ Returned Goods.....	24
Specifications/Accessories	25
WARRANTY	26
APPENDICIES	
A: CONFIGURATION SHEET.....	28
B. INSTALLATION CHECKLIST	29
C: FIRMWARE FUNCTIONS.....	30
D: SCREENS FLOW CHARTS.....	32
System Value Screens	
User ID Screens.....	32
Diagnostic Screens	32
Time/Date/Alarm Screens	33
Data Logger Screens	33
Calibration Screens.....	34
E: TROUBLESHOOTING WORKSHEET ...	35
F: FIGURES.....	37
G: <i>In vivo</i> chlorophyll concepts.....	42
FIGURES & DIAGRAMS	
Figure 1. Fluorescence Detection	1
Figure 2. Front View-External.....	9
Figure 3. Inlet Plumbing	37
Figure 4. Outlet Plumbing.....	38
Figure 5. Front View-Internal.....	39
Figure 6. Front View-External....	40
Definitions	41

INTRODUCTION

CHLOROPHYLL FLUORESCENCE



AlgaeWatch is a fluorescence sensor designed to monitor the level of chlorophyll containing cells in water. The **AlgaeWatch** continually senses the concentration of chlorophyll *a*, an indication of algal biomass, in the sample water.

Chlorophyll *a*, the primary photosynthetic pigment in all plants, is a fluorescent molecule. Where chlorophyll-containing organisms are small enough, as with phytoplankton or microalgae, fluorescence may be measured directly, *in vivo* chlorophyll detection, without extraction or chemical treatment. For many types of qualitative work, *in vivo* measurement alone may answer the experimenter's questions. For quantitative determinations, the *in vivo* data is calibrated by correlation with other measurements.

FLUOROMETER

The sample water containing algal cells is measured as a side-stream of the water passes through a polished, glass tube in the detection system. An excitation light source shines across the glass tube, the chlorophyll *a* in the water fluoresces, and a photodiode reads the emitted light. The quantity of light emitted is proportional to the amount of chlorophyll *a* present in the system (see Figure 1 below).

The **AlgaeWatch** consists of a microprocessor-based fluorometer with electrical inputs/outputs for a flow switch, 4-20mA signal and data logging. It is engineered to ensure reliability and pre-assembled to simplify installation. Plumbing and calibration accessories may need to be acquired (see Replacement Parts, page 17, for a list of recommended

parts and Figures 3 and 4, pages 36 and 37, for the plumbing diagrams).

UNITS

Because *in vivo* chlorophyll detection is a relative measurement we have not included units on the **AlgaeWatch** screen or in the logged data. However, if correlation between the **AlgaeWatch** signal and extracted chlorophyll analysis is conducted the **AlgaeWatch** can be calibrated to estimate actual chlorophyll concentration in micrograms/liter ($\mu\text{g/L}$) (please see Appendix G for greater detail).

THEORY OF OPERATION

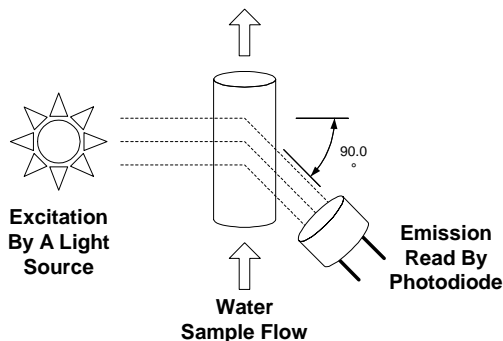


Figure 1. Fluorescent Detection

Theory of Operation

Fluorescence data can be used to supply an indication of algal growth in the sample water. Although the fluorescence data is not quantitative in nature (see Appendix G) a robust relationship between the fluorescence signal and actual chlorophyll concentration can be easily determined through a comparison with extracted chlorophyll samples. However, in many instances it may be more useful to develop a relationship between the fluorescence signal and another measure of algal growth such as cell counts or filter run times. In other cases the relative fluorescence signal may be all that is needed to make informed decisions. The power of the **AlgaeWatch** System is in the sensitivity of the fluorescence measurement and its ability to continuously monitor the algal community which is constantly changing; sometimes very rapidly.

The **AlgaeWatch** is designed to be easily interfaced into external logging or data collection software packages. It has an analog 4-20mA signal that can deliver real-time fluorescence data to an external logging system. The system also has a 20,000-point internal data logger with user-selectable data logging intervals. Logged data can be downloaded to a PC using the RS-232 data output port (see Internal Data Logger section, pg. 13).

Data Interpretation

Upon installation of the **AlgaeWatch**, the fluorescence data should be compared to data from other systems that are affected or used to monitor algae. For example, filter run times in a water treatment facility may be negatively correlated with algal biomass. By comparing the data you will find that a filter run time may be negatively affected when the fluorescence signal reaches a specific level. Once this relationship has been determined you can set alarms on the **AlgaeWatch** (see Alarms, pg. 18) or through the external logging system to notify you when this level is reached.

With this information you will be able to take actions to avoid decreased filter run times. Other examples of data that can be used to compare against the **AlgaeWatch** data include; presence of taste and odor in water, cell counts, turbidity or extracted chlorophyll data.

Once relationships between chlorophyll fluorescence and other measures of interest have been established, the fluorescence data can be used to assist in decision making. Examples of how the fluorescence data can be used include:

- 1) Location of water intake to minimize treating water with high algal biomass.
- 2) Determining when to treat water for high concentrations of algae and thus minimizing the amount of treatment chemical used

SPECIFICATIONS

- Power: 90-250 VAC, 50/60 Hz, 5 amps
- Relay: 90-250VAC, 50/60Hz, 5 amps (fused at 3.15 amps, Type “F”)
- Signal Output: One 4-20 mA (isolated)
- Dimensions: 8” W x 4” D x 15” H
- Weight: 5 lbs. [2.3 kg]
- Enclosure: Approximates NEMA 4X
- Maximum Water Pressure: 100 psi
- Inlet Pipe Size: ¼” NPT (male)
- Outlet Pipe Size: ¼” NPT (female)
- Ambient Temperature: 40-120°F [4°-49°C]
- Maximum Sample Temperature: 140°F [60°C]
- Relative Humidity: 0-100%
- Overvoltage Category II
- Pollution Category I

INSTALLATION

Pre-Installation/Installation

A pre-installation/installation checklist provides important guidelines and information to aid in preparing for installation. The checklist is found in Appendix B.

Power & Utilities Required

Power: 100-130 VAC/200-250VAC, 50/60 Hz, 5 amps.

Signal Output: One 4-20 mA signal (isolated)

Water Sample: Supplied to unit at 0.5 gpm minimum and less than 100 psi.

Drain: Sample outlet from the **AlgaeWatch** should be piped to drain with no back pressure, i.e., drain pipes must be below the unit. In installations where this is not feasible, contact Turner Designs Technical Support for further assistance.

Required Tools and Accessories

Standard plumbing and electrical tools are required for the installation.

A terminal strip screwdriver is provided for making terminal strip connections.

- ① The **AlgaeWatch** should be piped as shown in Figures 3 and 4, pages 36 and 37. The components may be purchased separately or as a package through Turner Designs.

Location of **AlgaeWatch** and Sampling Point

The **AlgaeWatch** is rated for light industrial environments. Do not install within 10 feet/3 meters of devices such as large generators that generate a strong electromagnetic field.

It is extremely important to eliminate air entrapment in the sample line. The best way to accomplish this is to sample from the center of the pipe or from the side of the pipe.

The unit should not be installed in direct sunlight; this could cause the internal temperature of the unit to be significantly higher than ambient and produce errors or damage the components (Note the maximum environment temperature is specified at 120°F/49°C).

- ① Do not mount this instrument on vibrating walls or surfaces. Damage can occur to critical components.

Mechanical Connections

Refer to Figure 6, Appendix F for the location of the required mechanical connections.

Two ¼ inch NPT pipe connections are provided for ¼ inch PVC pipe hook-up. The sample outlet line is ¼ inch female; the sample inlet line is ¼ inch male shut off valve.

If the Plumbing Accessory Kit is purchased, the outlet line is ¼ inch NPT (female) to connect to user-supplied ¼ inch male piping; the inlet line is ½ inch NPT (female) to connect to user-supplied ½ inch male piping (see Figures 3 and 4 on pages 36-37).

IMPORTANT:

- Sample discharge should flow to an unrestricted drain. Pipe rises greater than 10 feet [3 m] should be avoided.
- Mounting eyelets are an integral part of the plastic housing. Mounting the unit at eye level is recommended.

Electrical Connections

⚡ Electrical connections should be made only by trained personnel

Refer to Figure 5, pg. 38 for the “Terminal Connections”, showing the terminal strip location and configuration of the required electrical connections for the power, pump, flow switch and 4-20 mA connections.

To access the terminal strip, TURN OFF MAIN POWER TO THE INSTRUMENT AT CIRCUIT BREAKER, then remove the lower enclosure face (4 screws). There are two terminal strips within the instrument. #1-9 are for AC connections and A-L are for input/output connections.

To connect a wire to the terminal strip, TURN OFF MAIN POWER TO THE INSTRUMENT AT CIRCUIT BREAKER. Loosen the proper terminal screw (screwdriver provided) and insert wire from below into terminal. Tighten screw firmly. A termination legend is provided on the backside of the enclosure door for reference.

To disconnect a wire, TURN OFF MAIN POWER TO THE INSTRUMENT AT CIRCUIT BREAKER. Loosen the termination screw and pull the wire out of the terminal.

When finished, carefully insert the ribbon cable onto the PCB and replace enclosure face with the 4 screws.

- ⓘ Signal wires and power wiring should NOT be run in the same conduit. Failure to separate or shield these wires will result in electrical interference.

START-UP

Before start-up, the following items should be procured:

- Calibration Solution (ordered/shipped separately from unit)
- Distilled Water
- Dilute Acid (not included)
- Plumbing Kit (ordered/shipped separately from unit)

- ① Items listed above as 'ordered/sent separately' have distinct part numbers and do not automatically ship with an order.

Start-Up Procedure

1. Bring the sample flow to the unit. Check for leaks in the plumbing.
2. Switch the Main Power Switch (under the enclosure face; see Figure 2, page 9) to the ON position. The LCD will illuminate.

When the power is first turned on, an ID screen will appear for a few seconds, showing the firmware version and date. After 10 seconds (or press <ENT> or <HOME> for immediate access), the HOME screen will appear. The HOME screen will display the uncalibrated chlorophyll fluorescence value (3 digits).

If the screen is blank, try adjusting the screen contrast using the UP and DOWN ARROWS.

SAMPLE HOME SCREEN



- ① During start-up, all system values should be recorded in the configuration record located in Appendix A.

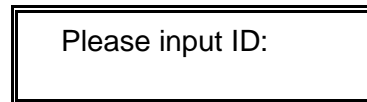
Entering System Values & Definitions

From the HOME screen, press <0> to enter/change the first System Value; Calibration Solution Value.

- ① For future reference, a diagram of the screens is located on page 31.

<0> **Cal Soln Value (Calibration Solution Value)**--This value relates the value of the calibration standard to a fluorescence measurement. The value is printed on the label of the calibration solution.

Before entering/changing the first System Value, the unit will prompt for the User I.D. and the screen will read



Enter a valid USER ID (default is 8520)

Press <ENT>

Key in the Calibration Solution Value

Press <ENT>

Press <HOME>

From the HOME screen, press <1> to enter/change the second System Value; Background Value.

<1> **Background Value**—This value is the background fluorescence (%) for the sample. Background fluorescence can be caused by materials in the sample water that have a similar fluorescence signature to chlorophyll *a*. Examples of interfering compounds include dissolved organic matter, accessory algal pigments, and degraded chlorophyll (pheophytin). High concentrations of interfering compounds can result in a slight increase to the fluorescence signal.

A means of compensating for this background fluorescence is to estimate the contribution of the interfering compounds to the fluorescent signal and enter the level of interference as the background value. The system will then automatically subtract the entered background level % from the fluorescent reading. The degree of background fluorescence varies from site to site.

- ① Unit must be calibrated prior to setting the Background Value.

To determine the appropriate background value %, filter a sample of water through a GF/F or membrane filter to remove all algal cells. Next, inject the filtrate into the **AlgaeWatch** using the syringe provided. Assuming that the default calibration is active (secondary standard set to 500), take the fluorescence value of the filtrate and plug into the following formulae;
Filtrate fluorescence (X) / 5 = Background Fluorescence %

Press <1>
Press <ENT>
Key in the Background Value (%)
Press <ENT>
Press <HOME>

From the HOME screen, press <2> to enter/change the third System Value; High Signal Alarm Level.

<2> High Signal Alarm Level—

If the fluorescence level rises above this level (and remains there for a 5 minute delay period), a high signal alarm will be triggered. The alarm triggers the 5V DC signal output which can be used to control external devices such as a light, siren or external control device (Please also see the section on Alarms, page 18).

Press <2>
Press <ENT>
Key in the High Signal Alarm Level
Press <ENT>
Press <HOME>

- ① Initially you will most likely want to leave the High Signal Alarm disabled until you become familiar with the typical fluctuations in chlorophyll levels. Once this is established you will know recognize abnormally high signal levels and then be able to set the alarm appropriately.

- ① From the HOME screen, press <3> to enter/change the fourth System Value; 4 mA Output.

<3> 4 mA Output—The 4-20 mA output can be connected by a signal wire to a data logger or other device to collect and store remotely from the unit. Outputs can be set to correspond to a certain range of fluorescence values. Typically the 4 mA output is set at 0.

The unit will reject as INVALID INPUT the new 4 mA value if it is not lower than the 20 mA output value.

Press <3>
Press <ENT>
Key in the 4 mA output
Press <ENT>
Press <HOME>

From the HOME screen, press <4> to enter/change the fifth System Value; 20 mA Output.

<4> 20 mA Output—The 4-20 mA output can be connected by a signal wire to a data logger or other device to collect and store remotely from the unit. Outputs can be set to correspond to a certain range of fluorescence values. The 20 mA output should be set to a value slightly higher than the highest fluorescence signal (algal biomass) you expect to experience. If the signal exceeds the assigned 20 mA value, the unit will simply output 20mA. If the 20mA value is set excessively high you will limit the resolution of your analog data.

The unit will reject as INVALID INPUT the new 20 mA value if it is not higher than the 4 mA output value.

Press <4>
Press <ENT>
Key in the 20 mA output
Press <ENT>
Press <HOME>

- ① The narrower the range of the 4-20 mA settings, the greater the resolution.
- ① During an alarm condition, the 4-20 mA output will still send out the fluorescence signal.
- ① During calibration the 4-20 mA output will send out a 4-mA signal.

From the HOME screen, press <5> to enter/change the sixth System Value; User ID

<5> **User ID Change**—For security, a USER ID is required to change the System Values or calibrate the unit. The original, or default, value is 8520.

To change the USER ID;

Press <5>
Key in Master ID (1962)
Press <ENT>
Key in new User ID.
Press <ENT>
Press <HOME>

From the HOME screen, press <6> to view the seventh System Value; AC Relay Status

<6> **AC Relay Status**—Displays the current activation status of AC Relays A and B. This screen is for visual status only, The AC Relays are used to control an external device activation state cannot be altered from the screen.

Press <6>
Status of AC Relays A & B
Press <HOME>

Setting the Real-Time Clock

- ① For future reference, record all set-up values in Appendix A.
- ① Before changing the date or time, be sure to download any data from the data logger.

From the HOME screen, press <⊕> to access the date, time, and AC relay alarm values.

<0> **Hour**—For the datalogger to reference the correct time, the hour of day must be entered. Only 1-12 numerical values will be accepted.

Press <⊕>, from HOME

Press <0> Key in the hour of day (1-12)
Press <ENT>
Press <ESC> to return to clock menu

<1> **AM/PM**—For the datalogger to reference the correct time (morning or evening), AM/PM must be entered. Use <ENT> to toggle between AM/PM.

Press <⊕>, from HOME
Press <1>
Press <ENT> to toggle between AM/PM
Press <ESC> to return to clock menu

<2> **Minutes**—For the datalogger to reference the correct time, the number of minutes after the hour must be entered.

Press <⊕>, from HOME
Press <2> Key in the minutes after the hour (0-59)
Press <ENT>
Press <ESC> to return to clock menu

<3> **Month**—For the datalogger to reference the correct date, the month of the year must be entered.

Press <⊕>, from HOME
Press <3> Key in the month (1-12)
Press <ENT>
Press <ESC> to return to clock menu

<4> **Date**—For the datalogger to reference the correct date, the day of the month must be entered.

Press <⊕>, from HOME
Press <4> Key in the day (1-31)
Press <ENT>
Press <ESC> to return to clock menu

<5> **Year**—For the datalogger to reference the correct date, the year must be entered.

Press <⏪>, from HOME

Press <5>

Key in the year (00-99)

Press <ENT>

Press <ESC> to return to clock menu

<6> **AC Cycle Time**— Controls the frequency in which AC Relay Outputs are activated. Range from 10 minutes to 96 hours.

Press <⏪>, from HOME

Press <6>

Press <ENT> to toggle (0min – 96hrs)

Press <ESC> to return to clock menu

<7> **AC On Time**— Controls the length of time the AC Relay Outputs stay on when they are activated. Range from 0-100% of the AC Cycle Time.

Press <⏪>, from HOME

Press <7>

Press <ENT> to toggle (0-100%)

Press <ESC> to return to clock menu

For Example: If you would like to use the AC Relay to control sample source using an automated valve you may want to sample raw water (containing algal cells) for 30 minutes every hour. In this case you would set the AC Cycle Time to 60minutes and the AC On Time to 50%. The result would be that the valve would allow treated municipal water to run through the system for 30 minutes every hour, thus limiting the effects of biofouling, and raw sample water would flow through the system for 30 minutes an hour.

*The **AlgaeWatch** unit start-up has now been completed.*

CAUTION: After start-up, wait a minimum of 15 minutes before calibrating the unit to allow the unit to come to equilibrium.

Figure 2. AlgaeWatch - Front View-External

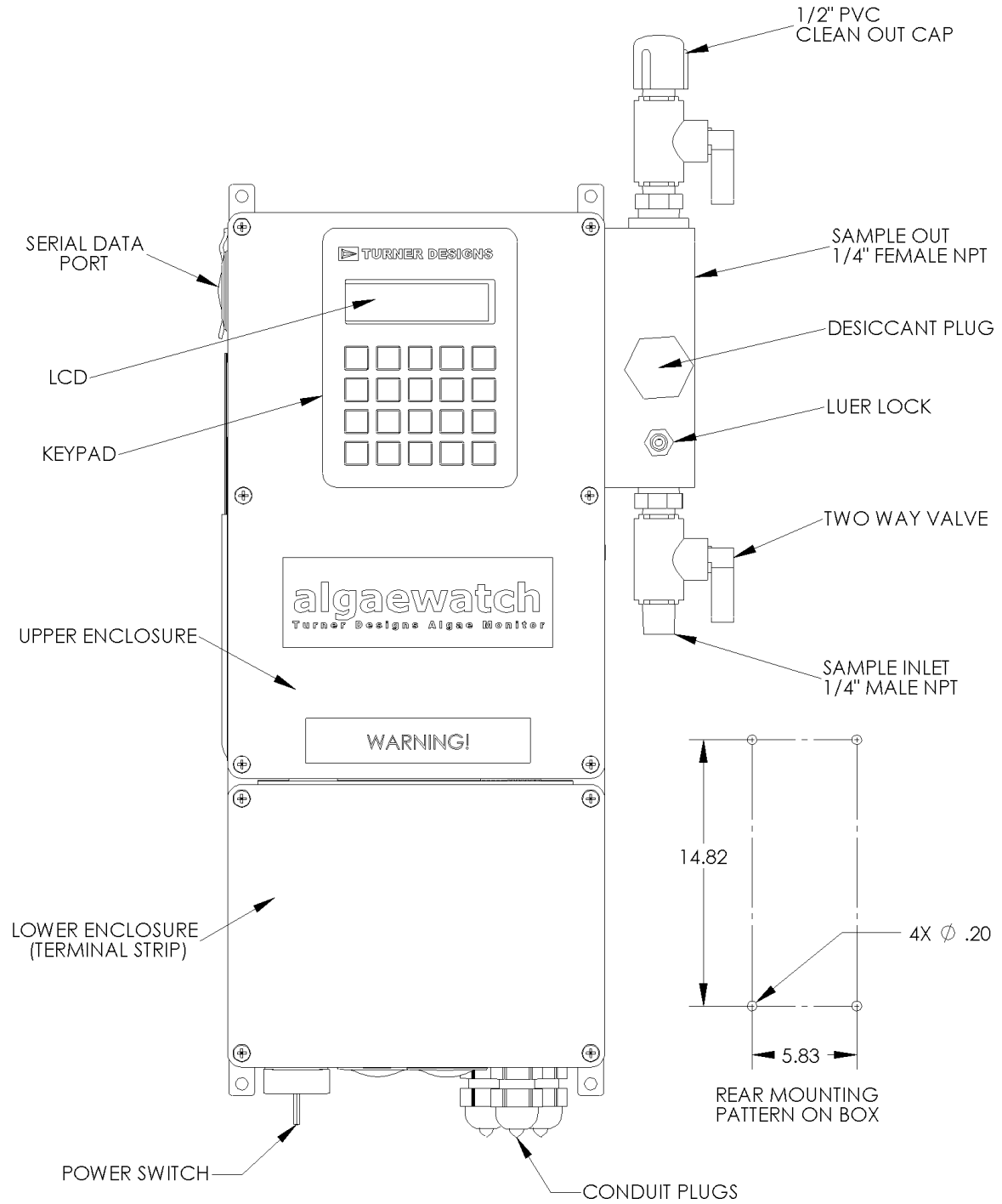


Figure 2. AlgaeWatch – Front View, External

CALIBRATION

Calibration Procedure

The Calibration Procedure will take approximately 5 minutes. The cleaning procedure will take approximately 10 ^① minutes. Refer to Figure 2 on previous page, for locations of items referred to in this procedure. For further reference, a diagram of the screens and a brief summary of the System Values can be found on page 27.

- ① Bubbles trapped in the syringe during injection of the blank or calibration standard are a possible cause of instrument error. With the syringe in a vertical position, tap the syringe against a solid object to move the bubbles to the needle end of the syringe. Then, force the bubbles out by pushing a small amount of solution through the needle end of the syringe.

Step 1 Close the two-way valve flowcell shut-off valve. The valve is closed when the handle is horizontal.

- ① **Blank and Dilute Acid Solutions:**
Both the Blank and Acid Solutions are not included with the **AlgaeWatch** System. Deionized water should be used as the Blank. 10% Sulfuric Acid recommended or 1:1 HCl is acceptable if the flowcell is well rinsed.

- ① **Calibration Solution:**
Confirm that the correct Calibration Solution is entered before beginning the Calibration Procedure by pressing <0> from the HOME screen (see Start Up Procedure for details, pg. 5).

Step 2 Clean the unit by injecting the dilute acid solution (see Notes on Calibration for details, page 12) with a syringe into the flowcell. The syringe screws onto the Luer Lock fitting on the inlet of the flowcell (see Figure 2, page 9). After filling the syringe with 60 ml of dilute acid, screw the syringe onto the fitting, inject the dilute acid at a slow, steady rate into the

flowcell, and allow it to stand for 3 to 5 minutes. Next, using a clean 60 ml syringe, flush the flowcell thoroughly with 60 ml of blank solution.

Syringes are provided in the Accessory and Calibration Kits. To purchase additional syringes see Replacement Parts, page 17.

Step 3 Press <ENT> from the HOME screen:

```
1. Calib   2. Data
Cal   0 Days Ago
```

Step 4 Press <1> the unit will request ID entry (unless recently entered):

```
Please input ID:
```

If requested, enter valid USER ID (originally 8520) on the keypad.

Step 5 Press <ENT>:

```
CALIBRATE SYSTEM
<1> to start
```

Step 6 Press <1>:

```
BLANK
SOLUTION
```

Using the blank solution syringe, flush the flowcell with 60 ml of blank solution via the Luer-lock Injection Port. Then inject another 60 ml blank solution and allow it to remain in the flowcell by leaving the syringe attached.

Step 7 Press <ENT>:

```
BLANK %:
XXXX
```

① Any value less than 25% is acceptable. If the blank is over 25% and <0> is pressed, you will receive an error message. Press <ESC> to abort the calibration and check the blank solution.

When reading is stable, press <0>. The unit will display a flashing "WAIT/wait" message in the lower right-hand corner of the screen while the unit registers the blank. Step 12

Then, the screen will display:

To continue
Press <ENT>

Press <ENT>:

CALIBRATION
SOLUTION

Using a clean syringe, flush the flowcell with 60 ml of Turner Designs calibration solution (see Replacement Parts, pg.17) via the Luer-lock Injection Port. Then inject another 60 ml calibration solution and allow it to remain in the flowcell by leaving the syringe attached.

Step 9 Press <ENT>:

CAL SOLUTION %:
XX

Wait for the reading to stabilize. The CAL SOLUTION % should be 1-10%. When the CAL SOLUTION % is stable and between 1 and 10, press <*>. The unit will display a "WAIT/wait" message in the lower right-hand corner of the screen while it registers the calibration solution. Then, the screen will display:

To continue
Press <ENT>

Step 10 Remove the syringe and press <ENT>:

Press <1> to End
Calibration

Press <1> to accept the calibration settings. The calibration is now complete. **YOU MUST** press <1> or the calibration will revert to the previous settings.

Step 11 Open the flowcell shut-off valve. The valve is open when the handle is vertical.

**** Calibration is finished ****

Press <HOME> to return to the HOME Screen and normal operations.

Notes on Calibrating

1. Calibrate the unit when you have time to go through all the steps without interruption (approximately 10 minutes). If the keypad is not used for 15 minutes, the unit will automatically return to the HOME screen. The previous calibration will be maintained.
2. The AC Relay activation schedule is **not** altered during calibration.
3. A request to begin calibration when an alarm is activated will be denied, unless the alarm is for:

High Signal Alarm ("S-H");
4. The following alarms will not be monitored during calibration:

High Signal Alarm ("S-H");
No Sample Flow Alarm ("N-F")
5. If an internal unit function alarm ("F-A" alarm) occurs during calibration, when you return to the HOME screen, "ALM" will be blinking in the upper left hand corner of the screen. Correct the condition causing the alarm, then recalibrate the unit.
6. During calibration, the 4-20 mA output will send out a 4-mA signal.
7. Use distilled or de-ionized water as blank solution. If you are not using commercial distilled water, check your source of blank solution against distilled water for background fluorescence. **DO NOT USE**

SAMPLE WATER AS A SOURCE OF BLANK SOLUTION. Use of the wrong blanking solution can result in inaccurate fluorescence values.

<1> Abort Cal
<ESC> Continue

8. Use only Turner Designs fluorescence calibration solution (see Calibration Solutions in the Replacement Parts, page 17). These calibration solutions meet strict specifications that are difficult to achieve when the solutions are made at the customer's site. Not using the Turner Designs solutions could result in inaccurate fluorescence values.
9. All solutions are injected with a syringe into the stainless steel Luer-lock Injection Port. **Depress plunger at a steady, slow rate.**
10. Use a separate syringe for the blank and calibration solutions.
11. Avoid injecting bubbles into the unit. Bubbles trapped when injecting the blank and calibration solution are a possible cause of instrument error. With the syringe in a vertical position, tap the syringe against a solid object to move the bubbles to the needle end of the syringe. Then, force the bubbles out by pushing a small amount of solution through the needle end of the syringe.
12. The LEFT ARROW may be used to return to previous calibration screens.
13. During the calibration sequence, **MAKE SURE** to wait for BLANK % and CAL SOLUTION % readings to stabilize before pressing the appropriate key on the keypad.
14. **DO NOT** allow the calibration solution to sit in the flowcell for longer than necessary (approximately 2 minutes).
15. To abort the calibration and maintain the current calibration settings, press <ESC> before step 9 is completed. The unit will prompt

Press <1> to abort.

16. The entire calibration procedure must be completed for the new values entered during calibration to be store

Calibration Data Screen

This screen provides a check on proper calibration. It is accessed from the HOME screen by pressing <ENT>, then <2>.

Table 1. Calibration Data

	Blank	Cal Std
Access Key	<ENT> & <2>	
Default	0.0	15.0
Range	0-250	0-1,000

Blank: Shows raw data output for blank solution as set during calibration. It can be used to check proper calibration.

- ① Blanking capability of the instrument is 25% (e.g. maximum blanking of raw data is 250.0)

Cal Std: Shows raw data output for the standard solution as set during calibration. It can be used to check proper calibration.

INTERNAL DATA LOGGER

AlgaeWatch is equipped with an internal data logger to record the unit's output. Data is saved in a compressed binary (BIN) format to be downloaded and converted to ASCII data with the Internal Data Logger (IDL) software.

Data Logger Parameters

The unit's data logger is accessed from the HOME screen by pressing the data disk <F4> symbol on the keypad. From the data logger menu, you can turn the data logger on/off, set the interval, and download and erase data.

- ⓘ The clock is important to the data logging functions. Once the date and time are set and data has been logged, download the current data before changing the date or time or you may corrupt or erase your data.
1. From the HOME screen, press <F4> to see the data logger menu. Before entering/changing the data logger, the unit will prompt for the User I.D. (Default=8520) and the screen will read:

Please input ID:

After entering the User ID the screen will read:

Datalogger:
<0> - <3>

2. To log data or stop logging data, press <0>:

Status: Stop
<ENT> to toggle

Press <ENT> to toggle from Stop to Logging. Press <ESC> to return to the main Datalogger screen.

3. To set the data logging interval press <1>. Press <ENT> to toggle from 1, 2, 3, 5, 10, 20, or 30 minutes, or 1 second.

Interval: 1 min
<ENT> to toggle

- ⓘ Download current data before changing the data-logging interval or you may corrupt your data.

4. To download the data to a Windows 95®-2000® based PC or to erase data, from the data logger menu, press <2> or <3>, respectively.

Installing the Internal Data Logger Software

The Internal Data Logger (IDL) software is designed to interface from the **AlgaeWatch** to a Windows 95®-2000® based PC. The IDL program is used to download the compressed data from the **AlgaeWatch** and convert it to an ASCII format for use with a spreadsheet or other program.

To install the IDL software:

1. Insert the IDL disk into your computer.
2. Access "Run" from Windows. Type: a:\setup. (Be sure to enter the correct drive for the disk.)

Running the Internal Data Logger Software

To download data from the **AlgaeWatch**:

1. Using the cable provided, connect your computer to the unit's serial port (phone jack style connector). (See Figure 2, page 9 to locate.)
2. Load the IDL program on the PC by clicking twice on the IDL.exe icon. The IDL Main Menu will appear.
3. Click on *Serial Port Setup* to select the appropriate port (1, 2, or 3) for your PC.
4. Click on *Download Data from Instrument to File* to display the downloading box on the PC.

① You may download and convert to an ASCII file in a single process by clicking on *Download and Convert Data from Instrument to File*. In this case, IDL will prompt you for downloading, then conversion in a single process incorporating steps 5 - 10.

5. From the **AlgaeWatch**, set the data logger to Stop, by pressing $\langle \text{F4} \rangle$ from the HOME screen, then $\langle 0 \rangle$, then $\langle \text{ENT} \rangle$ to toggle.

6. From the **AlgaeWatch**, access the downloading screen by pressing $\langle 2 \rangle$ from the data logger main menu:

Download data:
5x $\langle 8 \rangle$ to start

7. On the **AlgaeWatch**, press $\langle 8 \rangle$ five times to start downloading data. The PC will display a bar graph and data block countdown. The **AlgaeWatch** will display:

Download data:
Data Blks: XX

If there is an error in downloading data, the following screen will be displayed:

Comm error !!!
 $\langle \text{ESC} \rangle$ to retry

a. If the error screen appears, press $\langle \text{ESC} \rangle$ and make sure the serial cable is securely connected and operational.

b. Make sure the correct serial port has been selected (IDL software main menu).

c. Check to make sure that the **AlgaeWatch** date and time functions have not been changed for the current data logged.

d. Verify that you completed steps 1 - 7. Correct screens must be displayed on both the computer and **AlgaeWatch**.

8. When downloading is finished, IDL will ask you to name the file and select the path (folder) for the downloaded file. Click on Browse to change the name or path; or you can accept the default name (test.bin) and path. Then, click on OK to return to the Main Menu.

If you would like to wait until later to convert the data to ASCII format in order to save disk space, then skip to step 12. To convert the data to an ASCII file now, go on to step 9.

9. To convert a BIN file to a regular ASCII file (PRN file), from the PC click on the *Convert Downloaded Data File to ASCII File*. IDL will then ask you what file you would like to convert to ASCII. Click on Browse to locate the file or click on OK to accept the default file.

10. Click on OK to begin conversion. IDL will display "Conversion has started." IDL will convert the BIN file to an ASCII file of the same name with the extension "PRN". When "Conversion completed" appears, click on OK to return to IDL Main Menu.

11. To exit IDL, click on the "X" in the upper right-hand corner of the software window or select "Exit" from the file menu.

12. Disconnect the computer from the unit. Erase the data currently in the **AlgaeWatch** by pressing $\langle \text{F4} \rangle$ from the HOME screen, then $\langle 3 \rangle$ from the data logger menu:

Erase data:
 $\langle 9 \rangle$ 5X to start

When data is erased, the unit will display:

Erase data:
All Data Erased

13. Enter new internal data logging parameters on the **AlgaeWatch** if desired, or resume logging with the previous parameters.

14. Return the unit to normal operation.

Examining the Downloaded Data

The ASCII-format “PRN” files can be opened, viewed, or printed using most standard computer programs. To examine the data, run your program, then open or import the “PRN” file containing the downloaded data.

A typical line of data from the internal data logger will look like this (your numbers will vary):

00001:	10/24/91	14:10:28	=	11.300
↑	↑	↑		↑
Index	Date	Time		Sample Reading

PREVENTATIVE MAINTENANCE

Proper preventative maintenance is critical to the success of the **AlgaeWatch** System. Once the unit is installed, started-up, and calibrated, the initial settings should not require change. Refer to Start-up, page 5, of this manual for instructions. Any start-up or shutdown must be made using the **AlgaeWatch** Main Power Switch (see Figure 2, page 9).

- ① The System Values are retained in battery back-up memory for up to five years. However, the Start-up procedure should be followed to ensure fluorometer calibration and alarm settings are correct if the unit has been disconnected for any length of time.
- ① This unit has been assembled with a new desiccant plug to ensure the area surrounding the flowcell is free of any moisture. As this plug absorbs condensate, it will change from a light blue to light pink at the saturation point and should be replaced promptly. The unit can remain in operation during this replacement. Readings should be monitored during this replacement time as small variances might occur. Refer to the Replacement Parts section, pg. 17, for replacement plugs ordering information.

The following preventative maintenance should be performed to ensure optimum operation and maximum life.

Cleaning the Basket Strainer

The basket strainer screen should be cleaned as needed as follows:

- 1) Shut off the inlet valve to the basket strainer;
- 2) Remove the screen by unscrewing the clear plastic basket housing and clean the screen;
- 3) Replace the screen;
- 4) Open the inlet valve to the basket strainer.
- 5) Wait for the unit to equilibrate and air to purge from the unit.

Calibrating

Calibration should be checked regularly. Typically, calibration should be checked using the secondary standard included in

the calibration kit every two to three weeks.

Cleaning the Flowcell

How often the flowcell should be cleaned depends on the quality of the water being monitored. The flowcell is unlikely to clog, but occasionally residue or biofilms can build up on the inside of the glass cuvette. A fouled or discolored flowcell can result in low or erratic readings.

Initially, routine flowcell cleaning should be conducted and fluorescence readings before and after cleaning should carefully noted. If a significant change in the reading resulted from cleaning, a shorter cleaning interval should be implemented. If there was no significant change in the reading after cleaning, a longer cleaning interval can be used.

For routine cleaning, follow steps 1 and 2 in the Calibration Procedure, page 10; open the flowcell shut-off valve when cleaning completed.

For cleaning the flowcell with a brush, perform the following steps (refer to Figure 2, pg. 9):

1. **Turn OFF the Main Power Switch.**
2. Shut off the flow to the flowcell. Flow is off when valve handle below the flowcell is horizontal. It is recommended that the inlet valve be closed and the 3-way outlet valve also be closed (the outlet valve is then open to the atmosphere; see Figures 4 and 5, pages 37-38).
3. **CAUTION:** After injecting acid solution into the flowcell via the luer lock port, be sure to flush it out completely **BEFORE** removing the clean-out cap.
4. Remove the clean-out cap and open the clean out valve (horizontal position). Dip the flowcell brush into the dilute acid solution and insert it gently into the clean-out opening.
5. Slide it gently up and down in the opening to remove any coating on the glass cuvette.

6. Close the clean-out valve (vertical position) and replace the flowcell clean-out cap.
7. Turn on the flow. Flow is ON when the valve handle is vertical.
8. Turn ON the Main Power Switch.
9. Calibrate the unit after allowing it to warm up for 15 minutes (refer to Calibration Procedure, page 10).

Replacement Parts:

6000-900	Calibration Kit
6000-970	Desiccant Plugs (Pkg. 3)
6000-350	Flowcell Brush (Pkg. 3)
6000-119	Data Cable
6000-910	Syringes (Pkg. 10)
120-0110	Flow Switch
119-0103	Basket Strainer

Biofouling

Sample water containing bacterial and algal cells will be in contact with the glass flowcell of the **AlgaeWatch** System. Because of this a biofilm will gradually begin to grow on the flowcell and at some point the film will become thick enough to interfere with the fluorescent readings. The rate of fouling will change from site to site.

The **AlgaeWatch** has an optical compensation system that will correct for fouling to a certain point. Beyond this it is the user's responsibility to clean the flowcell on a regular basis to prevent corruption of the data. There are several ways in which the rate of biofouling can be slowed.

- 1) Flow rate: As the flow rate in the flowcell increases the rate to which biofouling organisms and attach and grow on the flowcell walls will decrease. The minimum flow rate required is 0.5 gpm. Flow rates in the range of 2-5 gpm could significantly decrease flowcell fouling rates.
- 2) Flowcell cleaning: The **AlgaeWatch** has been designed to allow quick and easy cleaning of the flowcell. A regular schedule should be established in order to prevent the establishment of biofouling organisms on the flowcell. .

ALARMS

Alarms have been built into the unit to warn about conditions relating to high algal levels and internal instrument functions. There are two types of alarms for **AlgaeWatch**:

1. System function alarms, Fluorometer (lamp) and No Flow (“F-A” and “N-F” alarms). See Table 2.
2. High Signal alarms. See Table 3, page 19.

① Refer to Table 5, page 25, for default values.

Alarm Delay

To avoid unnecessary triggering of alarms, the condition must be in effect for a certain delay period. See Tables 2 and 3.

Alarm Activation

When an alarm is triggered, “ALM” will blink in the upper left hand corner of the HOME screen. From any other screen, when the alarm is **first** activated, the unit will return to the HOME screen, display the “ALM” message in the upper left hand corner. Pressing the <ESC> key will display the current alarm. Take the appropriate action to clear the condition (see Troubleshooting, page 20).

When the condition triggering the alarm is cured, “ALM” will disappear from the HOME screen.

Alarms cannot be aborted without curing the problem.

Multiple Alarms

If multiple alarms are triggered, alarms will be listed on the alarm screen when <ESC> is pressed from the HOME screen. (Note: alarms are not listed in the order they occur.) For example, the alarm screen might display:

N-F	F-A
-----	-----

Alarm History

The alarm history can be viewed, by pressing <←> (LEFT ARROW) from the HOME screen. This shows which alarms have been activated since the alarm history screen was last cleared. To clear this screen, press <*> five times while the alarm history screen is displayed; “No alarm since last reset” will be displayed.

Notes About Alarms

1. No alarms are monitored when the unit is turned OFF.
2. Certain alarms are not monitored during calibration (see Notes on Calibrating, page 11).
3. When the unit is first powered up, the HIGH SIGNAL alarm will begin to be monitored 5 minutes after start up. Thus, a problem or spike during start-up will not mistrigger the HIGH SIGNAL ALARM.
4. All alarms will be reset automatically if the alarm condition is corrected.
5. During an alarm condition, the 4-20 mA will still send out the fluorescence signal.

Table 2. System Function Alarms

Alarm	Delay (min.)	Alarm Condition	Normal
Lamp (F-A)	1	OFF	ON
No Sample Flow (N-F)	5	OFF	ON

System Function Alarm Definitions

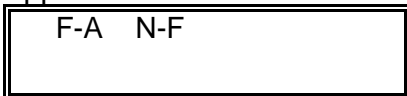
a. **Lamp (F-A)**--Indicates the status of the excitation light source. Reports whether the lamp is OFF or ON. If the power is ON and the lamp is good, the diagnostic screen will display "Lamp: ON".

b. **No Sample Flow (N-F)**--If there is a problem with the sample flow lasting for the 10 minute delay period, a "N-F" alarm will be noted. The flow switch used is rated at 0.5 gpm minimum flow (tolerance is 0.4 - 0.6 gpm).

If there is a "N-F" alarm, check terminal connections to the flow switch. Check the sample feed lines and the unit's flowcell for any restriction.

- ① Electrical connections should be performed only by trained personnel.

To determine which alarm is currently active, press <ESC> from the HOME screen and the alarm status screen will appear.



You may also view the lamp and flow status in real-time by accessing the diagnostic screens. The diagnostic screens are accessed by pressing <*> from the HOME screen and then <ENT>. (See Diagnostic Screen flowchart, pg. 31)
If the Lamp displays "OFF" and there is power to the unit, contact the Turner Designs Technical Support.

High Signal (S-H)--If the fluorescence signal rises above the user-set level (see Table 5, page 24), and remains there for the 2 minute delay period, a "S-H" alarm will be noted.

If there is a "S-H" alarm, check if the High Signal Alarm Level is set too low. Verify that calibration has been performed properly.

Table 3. High Signal Alarms

Alarm	Delay (min.)	Range	Default
High Signal (S-H)	2	0.2-999	999

TROUBLESHOOTING

Introduction

Because the **AlgaeWatch** system includes hardware, software, and chemistry, it is important to collect all the diagnostic data first. To facilitate data collection, each **AlgaeWatch** unit is shipped with the Troubleshooting Worksheet (E). After collecting the data requested by the worksheet most problems can be solved over the phone with the assistance of Turner Designs Technical Services (see Service Assistance/Returned Goods, page 24, for contact information).

When using this guide, it is assumed that all problems associated with an alarm have been resolved first. Something as simple as a clogged basket strainer can lead to other alarm messages, which could all be solved at one time simply by cleaning basket strainer. Generally speaking, if there is no System Function Alarm (“F-A” alarm), this is persuasive evidence that the electronics of the instrument are functioning properly. In that case, it is likely that any problem is either mechanical, or has resulted from another system problem, or from the operator’s unfamiliarity with the unit.

The troubleshooting procedure works best in this sequence:

1. Handle any alarms (see Alarms, page 17).
2. Determine whether or not the System Values have been entered correctly (see recorded values in Appendix A and the System Default Values in Table 5, page 24).
3. Perform the Diagnostics procedure as described on the following page.
4. Determine whether or not the chemistry is behaving as expected. Does the blank read close to zero on the HOME screen and calibration solution read between 1-5% on the calibration screen? Check the “Cal data” screen (see Calibration Data Screen,

page 11) to determine whether the last calibration seems correct.

5. Complete the Troubleshooting Worksheet, Appendix E.

6. Contact the Turner Designs Technical Support (see Service Assistance/Returned Goods, page 24).

Diagnostics

AlgaeWatch contains diagnostic screens and functions to aid in troubleshooting. These functions are accessed from the HOME screen by pressing <*>, then <ENT> to page through the series of 4 screens. Press the <LEFT ARROW> to return to a previous screen, or <ESC> or <HOME> to return to the HOME screen.

1. From the HOME screen, press <*>

TURNER DESIGNS
6500XBL 1.0 0302

This screen displays the version number and release date of the firmware installed in the instrument.

2. From the above screen, press <ENT>

Raw: XXX
FS% XX

Raw—The “raw” signal output is the output from the unit’s light detector. This is the output **AlgaeWatch** uses (in conjunction with the Cal Soln Value, Background value, etc.) to arrive at the fluorescence readout on the HOME screen. It can be used to diagnose problems with the unit. For example, if the HOME screen always reads zero, and the Raw reading is also zero, there may be an optics problem. If the HOME screen reads zero but the Raw reading does not read zero, then check the Cal Soln Value to make sure the proper value is entered.

FS%--Acts like an analog meter. Indicates the raw signal output as a percentage of the maximum that can be read.

Value Range

RAW 0.00 to 1000.00

(reading >1000.00 will display “OVER”)

FS% 0 to 100 (if Blank equals 0)

For definitions, ranges, and default values of these items, see Calibration Data Screen, page 12.

3. From the above screen, press <ENT>

1: Test RlyA: ON 2: Test RlyB: OFF

AC Outputs—Two independent solid state relays control AC electrical output through connections (terminal strip connections 4-9) If **AlgaeWatch** is connected to an automated valve or other control device via terminal strip connections 4-9, this function allows you to test whether the unit's internal circuitry is operating and terminal strip connections are correct. To test the device control of the **AlgaeWatch**, the device itself must be on, working, and properly connected to the terminal strip. Press <1> (or <2>) from the screen above, then <ENT> to toggle the chosen relay ON and OFF. The device should go on when ON is selected and off when OFF is selected. If it does not, then be sure to check the device itself first, then check the terminal strip connections (**trained personnel ONLY**). When the test is finished, return to the HOME screen and device control will revert to control by current unit values. This function can serve as a “manual override” for device control tests. While on this screen, you can turn a device on and off regardless of the unit values previously entered.

4. From the above screen, press <ENT>

Oper: XXXX Hrs Lamp ON Flow: ON

Oper—This indicates how many hours the unit has been in operation since installation.
Lamp—This indicates whether the LED light source is operating properly.
Flow—This indicates whether the flow is ON/OFF.

5. From the above screen, press <ENT>:

Blank: X.X Cal std: XXX.X

Troubleshooting Guide

REMEMBER, handle any alarms FIRST.

SYMPTOM	POSSIBLE CAUSE	SOLUTION
<p>HOME screen displays over/OVER (blinking from over to OVER).</p> <p>A blinking 'over/OVER' is a different symptom than a steady 'OVER' and indicates that the sample reading exceeds 999. This is most likely related to the System Values entered for the site. If, for example, a Cal Soln Value of 200 was erroneously entered, the unit's numerical calculation of the sample reading might exceed 999. (NOTE: Examine "Possible Cause"/"Solution" in the numbered order.)</p>	<p>1. System Values are incorrect (i.e. Cal Soln Value, etc.).</p>	<p>1. Check the Configuration Record for the site. Access the System Values and verify that they are entered correctly.</p>
	<p>2. Incorrect calibration</p>	<p>1. Check the Calibration Data screen. Recalibrate the unit; be sure to use the correct calibration solution and that the reading is between 1% - 10%. Check the expiration date of the solution.</p>
<p>HOME screen displays OVER (not blinking from over to OVER).</p> <p>A steady 'OVER' is a different symptom than a blinking 'over/OVER' and indicates that the sample reading is too high for the unit's light detector. This is related to the chemistry of the sample and displays that the sample readings are too high for the unit at the current sensitivity level. (NOTE: Examine the "Possible Cause"/"Solution" in the numbered order.)</p>	<p>1. Possible optics problem. Improper or deteriorated filters.</p>	<p>Check the FS% reading in the Diagnostics sequence.</p>

SYMPTOM	POSSIBLE CAUSE	SOLUTION
	2. Incorrect calibration.	Recalibrate the unit, making sure that you are using the correct Calibration Solution, and that it reads between 1 and 10%. Check the expiration date of the solution.
	3. System Values are incorrect (i.e. Cal Soln Value, etc.).	Check the Configuration Record. Access the System Values and verify they are entered correctly.
HOME screen displays minus sign (negative readings), i.e., sample is reading less concentrated than blank as set during last calibration.	1. Fouled flowcell.	Thoroughly clean and rinse flowcell with recommended solution, using the brush if necessary. (See Cleaning the Flowcell, page 16.)
	2. Calibrated with contaminated blanking solution, or the calibration solution was used instead of the blank solution.	Recalibrate.
HOME screen reads zero.	System Values incorrectly set.	Make sure valid System Values entered (see Appendix A).
Screen blank or black.	LCD's screen contrast too high or too low	If screen is blank, adjust contrast by pressing UP ARROW (if screen is black, use the DOWN ARROW) continuously until screen is visible. Use UP and DOWN arrows to fine adjust.
Unit does not calibrate.	Failure to complete entire calibration procedure.	You must press <1> at the end of the calibration sequence for the unit to accept the values. Recalibrate.
AC Out is not operating properly.	1. Problem with terminal strip connections; or device itself.	If there is an alarm, check the High Signal Alarm for 0-5V signal problems. Refer to Diagnostics (page 20), AC Out test function, to test if the unit is properly controlling the device using the AC Relays. Make sure the device itself is powered on and operational.
	2. Fuse has 'blown'.	Replace fuse with spare fuse located in the spare fuse holder on the PCB.

SYMPTOM	POSSIBLE CAUSE	SOLUTION
Background value ineffective (i.e. HOME screen reading does not change when the Background value is changed).	This is not usually cause for alarm as the HOME screen reading is a result of a combination of factors.	Do not attempt to change current settings unless you are <u>certain</u> something is wrong. Consult with the Turner Designs Technical Services.
Unit does not respond to calibration solutions.	System Values incorrectly entered.	Check that the correct Background Test Value and Cal Soln Value have been entered (see Appendix A).

SERVICE ASSISTANCE/RETURNED GOODS

Turner Designs' experienced technical staff is available to assist you in troubleshooting the **AlgaeWatch** unit. However, should you need to return anything for the unit, a Returned Materials Authorization (RMA) must be obtained from Turner Designs. Please call prior to returning any equipment. The use of an RMA minimizes the potential for administrative delays and facilitates prompt turn-around.

Turner Designs Technical Support
Telephone: 877-316-8049 (Outside U.S. 408-749-0994) FAX: 408-749-0998 E-mail: support@turnerdesigns.com Hours: 8:30 a.m. – 5:00 p.m., Pacific Time

SPECIFICATIONS AND ACCESSORIES

Specifications

Power:	90-250 VAC/200-250 VAC, 50/60 Hz, 5 amps
Relays:	90-250 VAC/200-250 VAC, 50/60 Hz, 5 amps (fused at 3.15 amps ea. Type "F")
Signal output:	One 4-20 mA, isolated
Dimensions:	8" W x 4" D x 15" H; 20cm x 10cm x 38cm
Weight:	5 lbs; 2.3 kg
Enclosure:	Approximates NEMA 4X
Sample Flow:	
Maximum Water Pressure:	100 psi
Plumbing:	
Inlet Pipe Size:	¼" NPT (Male)
Outlet Pipe Size:	¼" NPT (Female)
Environment:	
Ambient Temperature:	40°F to 120°F; 4°C to 49°C
Maximum sample temperature:	140°F; 60°C
Relative Humidity:	0-100%

Table 5. System Default Values and Ranges

SYSTEM VALUE	ACCESS KEY	DEFAULT VALUE	RANGE
Cal Soln Value	<0>	15.00	0.000 to 998.000
Background Value	<1>	0.0%	0.0 to 100.0
High Signal Alarm Level	<2>	999.000 (PPM)	0.004 to 999.000
4 mA Output	<3>	0.000	0.000 to 998.000
20 mA Output	<4>	100.00	0.002 to 999.000
Software Version	<*>	N/A	Fixed
Master ID	<5>	7420	Fixed
User ID	<5>	8520	0 TO 9999
AC Cycle Time	<clock>, <6>	OFF	1 to 168 hours
AC On Time	<clock>, <7>	OFF	1 to 1440 min.

Accessories Included with Unit

- Flowcell brush
- Terminal strip tool
- Operating manual
- 2 spare clean-out port caps
- Datalogger cable
- Datalogger disk
- Spare desiccant plugs

Suggested Optional Accessories

- **Calibration Kit (P/N 6500-900):** Kit includes Calibration Standard (1L), syringes, flowcell brushes
- **Plumbing Kit (6500-955):** includes inlet and outlet plumbing kits

Warranty Terms

Turner Designs warrants the AlgaeWatch and accessories to be free from defects in materials and workmanship under normal use and service for a period of 12 months from the date of shipment from Turner Designs with the following restrictions:

- Turner Designs is not responsible for replacing parts damaged by accident or neglect. Your instrument must be installed according to instructions in the User's Manual. Damage from corrosion is not covered. Damage caused by customer modification of the instrument is not covered.
- This warranty covers only Turner Designs products and is not extended to equipment used with our products. We are not responsible for accidental or consequential damages, except in those states where this limitation is not allowed. This warranty gives you specific legal rights and you may have other rights which vary from state to state.
- Damage incurred in shipping is not covered.

Warranty Service

To obtain service during the warranty period, the owner shall take the following steps:

1. Write, email or call the Turner Designs Technical Support department and describe as precisely as possible the nature of the problem.

Phone: 1 (877) 316-8049

Email: support@turnerdesigns.com

2. Carry out any adjustments or tests as suggested by the Technical Support Department.

3. If proper performance is not obtained you will be issued a Return Materials Authorization number (RMA) to reference. Package the unit, write the RMA number on the outside of the shipping carton, and ship the instrument, prepaid, to Turner Designs. If the failure is covered under the warranty terms, the instrument will be repaired and returned free of charge, for all customers in the contiguous continental United States.

For customers outside of the contiguous continental United States who purchased equipment from one of our authorized distributors, contact the distributor. If you purchased directly, contact us. We will repair the instrument at no charge. Customer pays for shipping duties and documentation to Turner Designs. Turner Designs pays for return shipment (custom duties, taxes and fees are the responsibility of the customer).

Out-of-Warranty Service

Follow steps for Warranty Service as listed above. If our Technical Support department can assist you by phone or correspondence, we will be glad to, at no charge. Repair service will be billed on a fixed price basis, plus any applicable duties and/or taxes. Shipment to Turner Designs should be prepaid. Your bill will include return shipment freight charges.

Address for Shipment:

Turner Designs, Inc.
845 W. Maude Ave.
Sunnyvale, CA 94085

**APPENDIX A
CONFIGURATION RECORD**

Date Configured: _____

Technician: _____

Serial Number: _____

System Value	Range	Configuration
Background Value	0.0 to 100.0 %	
Cal. Solution Value	0.000 to 998.000	
High Signal Alarm Setpoint	0.004 to 999.000	
4mA Output	0.000 to 998.000	
20mA Output	0.002 to 999.000	
AC Cycle Time	10min - 96hours	
AC On Time	1 to 100% of AC Cycle Time	
User ID	4 digit	

APPENDIX B

Pre-Installation/Installation Checklist

The following checklist is provided so the appropriate preparations may be made prior to equipment start-up. Completion of the listed items is mandatory to assure proper installation and a properly-functioning piece of equipment.

1. _____ Check sample water background fluorescence (Background lab test code).
2. _____ Check that the turbidity is less than 150 NTU.
3. _____ Assure water temperatures of 32-140°F.

INSTALLATION REQUIREMENTS - CUSTOMER

1. _____ Locate the unit within 125 feet from the sample point.
2. _____ Locate the unit out of direct sunlight.
3. _____ Locate the unit where ambient temperatures are 40-120°F/4-49°C.
4. _____ Locate the unit at least 10 feet/3 meters from devices such as large generators, which require a great deal of electrical power, or generate a strong electromagnetic field.

CUSTOMER REQUIREMENTS - PLUMBER

1. _____ The sample stream must be plumbed to the unit to deliver at a rate >0.5 gpm (between 0.5 and 1.25 gpm is optimal) and <100 psi. One ½-inch and one ¼-inch NPT pipe connections (both female) are provided for PVC pipe hook-up (refer to Figure 3 and 4, page 36-37). Ensure that sampling point will avoid air entrapment.
2. _____ Sample from the side of the water line to avoid air entrapment.
3. _____ Provide a free, unrestricted drain for the sample stream, preferably to the tower basin (no back pressure, max. 10 ft/3 m rise).

CUSTOMER REQUIREMENTS - ELECTRICIAN

1. _____ Ensure that the environment will support a NEMA 4X-type enclosure.
2. _____ Provide 90-250 VAC, 50/60 Hz, 5 amp electrical service to the **AlgaeWatch**.
3. _____ If the unit's 4-20 mA output signal will be used, check to see if an isolator should be purchased.
4. _____ Terminate flow switch wiring on terminal strip (refer to Figure 5, pg. 38).

FINAL REQUIREMENTS - CUSTOMER

1. _____ Obtain needed materials (calibration solution, distilled water, dilute acid, calibration kit, flowcell cleaning brushes)

Customer's Responsibilities: This checklist outlines the work that is required prior to start-up. Work is necessary to ensure quality and proper operation. However, if any of these requirements cannot be met, contact Turner Designs Technical Services. In some cases, alternative procedures will still provide reliable results.

APPENDIX C

FIRMWARE FUNCTIONS

The unit has a software interface that simplifies calibration and changes of unit values (See Screens Flow Charts, pages 31-33). The following descriptions of the unit's software functions will help provide a better understanding of the unit:

1. Screens—Built into the unit are a series of computerized screens, which are called up using the keypad and shown on the digital display.

1.1 Home Screen—Once the unit has been activated, the HOME screen is continuously displayed, except when accessing other screens.

From the HOME screen, access the calibration data and the calibration sequence by pressing <ENT>. Other screens are accessed from the HOME screen by pressing various keys on the keypad.

Go to the HOME screen by pressing the <HOME> key, except during the calibration procedure. To return to the HOME screen from calibration, first press <ESC> to abort the calibration sequence.

1.2 Warning Screens—There are warning screens throughout the software that inform of invalid entries (for values or ID).

1.3 Alarms—When an alarm occurs, "ALM" blinks in the upper left hand corner of the HOME screen. The nature of the alarm can be discovered by pressing <ESC> from the HOME screen (see Alarms, page 17, and Troubleshooting, page 19).

2. Keypad Functions

2.1 Left Arrow—The LEFT ARROW can be used to correct typing errors when data is being entered or changed. It acts as a backspace or delete key.

During calibration, it can be used to return to previous screens in the sequence if you wish to re-run the calibration.

It is also used from the HOME screen to view the alarm history.

2.2 Up and Down Arrows—From HOME screen, can be used to change screen contrast.

2.3 Escape and Enter—You can escape to the previous screen or abort the calibration sequence by pressing the <ESC> key.

While viewing a System Value, press <ENT> to access the screen to change that value. After entering a new System Value, press <ENT> to accept the new value.

3. User Identification—To change System Values or to calibrate the instrument, a four-digit USER ID is required.

For security, a MASTER ID, different from the USER ID, is required to view or change the USER ID.

Once an ID has been entered, if the keypad is not used for 15 minutes, the unit will automatically return to the HOME screen. The ID will have to be entered again before the unit values can be changed or calibration can be performed.

4. **Fluorescence Display**—After the unit is powered-up or after calibration, the fluorescence displayed will not react immediately, but will respond after a delay of about 10 seconds.
5. **LCD Contrast**—The contrast of the Liquid Crystal Display can be adjusted on any screen (except during calibration) by pressing the UP and DOWN ARROWS.

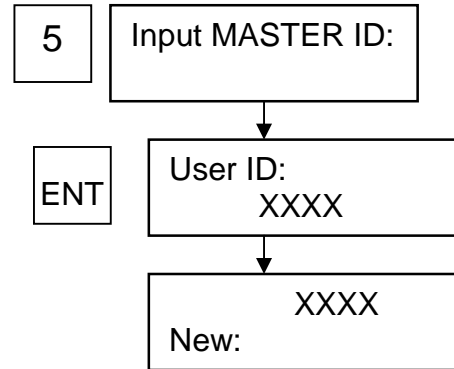
APPENDIX D

Screens Flow Chart

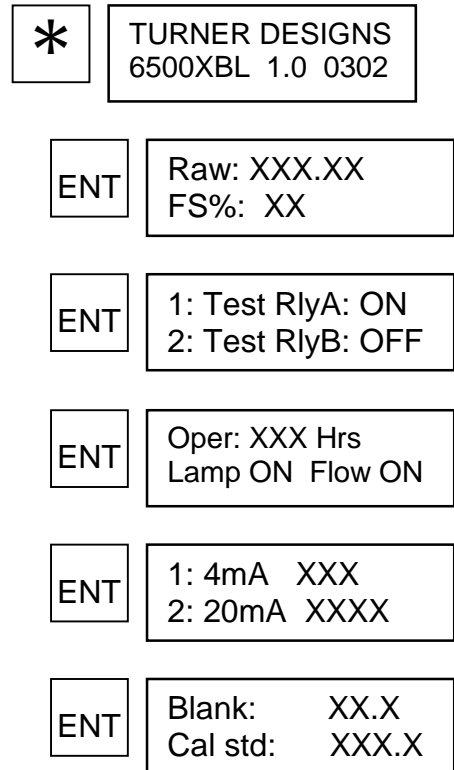
Systems Values. From the HOME screen, press key to view value. To change value, press <ENT> while viewing, input ID, enter new value, and press <ENT> again. Press HOME screen.

HOME	XXX AlgaeWatch	Home Screen shows fluorescence signal and whether data logger and alarms are active.
0	Cal Soln value: XXX.XXX	Relates the value of the tracer standard to a fluorescence measurement.
1	Background Value XX.X	Background fluorescence for system.
2	High Sig Alarm: XXX.XXX	Set the fluorescence value that once exceeded will set the High Signal Alarm
3	4mA output: XXX.XXX	Output can be set to correspond to a certain fluorescence signal.
4	20mA output: XXX.XXX	
←	S-H N-F	View alarms triggered since last reset.
ESC	N-F	If alarm is triggered, shows which alarm(s).

To view or change User ID, Master ID is required:



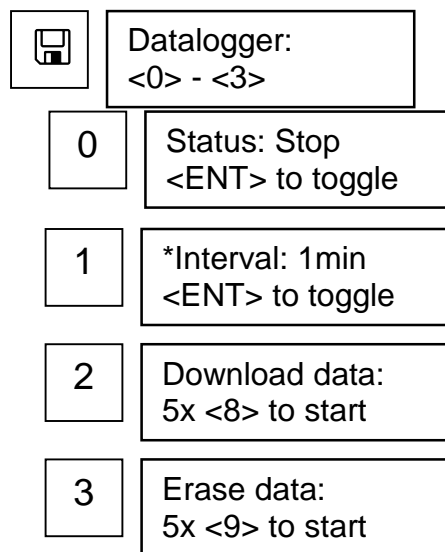
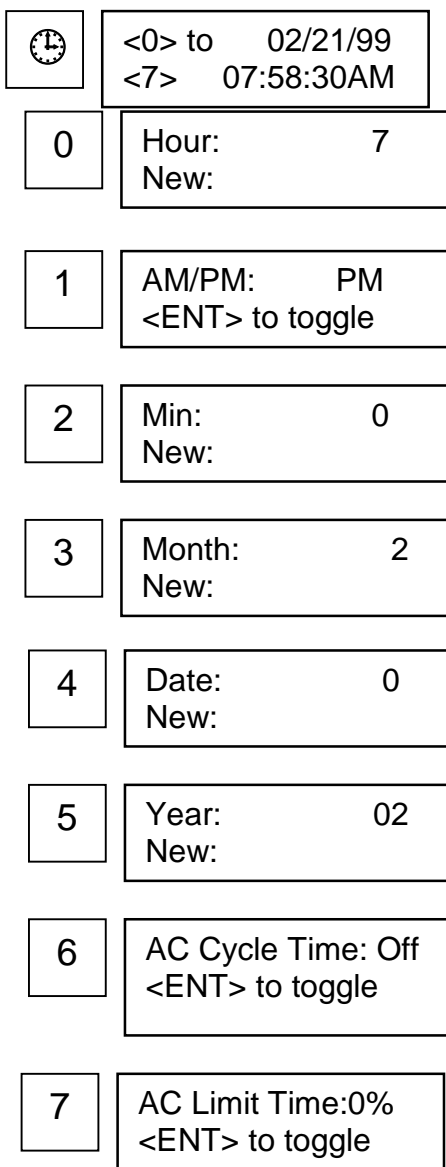
Diagnostic Screens. To access unit's diagnostic screens, from HOME press:



Screens Flow Chart (Con't)

From the HOME screen, press <F1>, <F2>, or <F3> to access the following functions. For example, to change the clock settings or alarm functions, first press <F1>, then the number of the function to be changed. Key in the new value and press <ENT>, then <ESC> to return to the clock menu.

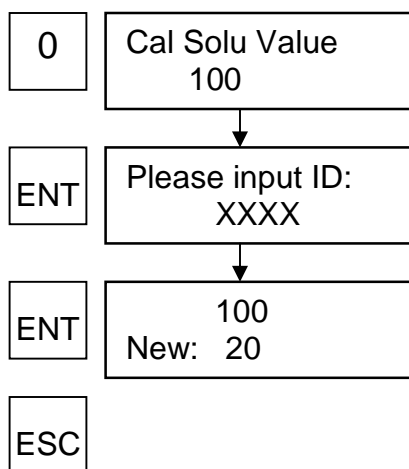
Time*, Date*, & Alarm Screens Datalogger Screens



****Download data logger before changing!***

Changing Calibration Solution Value

From the HOME screen:



Screens Flow Chart (Con't): Calibration Screens

Clean the flowcell before calibrating.

Press See Screen
Key

HOME	XXX AlgaeWatch	1. From the HOME screen, press <ENT>.
ENT	1. Calib 2. Data Cal XX Days Ago	2. Press <2> to view raw data output for blank and standard as set during current calibration, OR, press <1> to begin calibration sequence.
2	Blank: XX.X Cal std: XXX.X	
1	Please input ID:	3. If requested, key in ID and press <ENT>. If not requested, go to step 4.
ENT	CALIBRATE SYSTEM <1> To Start	4. Press <1> to begin.
1	BLANK SOLUTION	5. Close the valve to stop sample flow by moving lever to the horizontal position. Inject 120 ml of blank solution (flush with 60 ml, then allow portion of second 60 ml to remain in flowcell). Press <ENT>.
ENT	BLANK %: XX	6. If the number shown is less than 25, wait for number to stabilize, then press <0>.
0	BLANK %: XX <i>wait</i>	7. After WAIT command disappears, unit will prompt you to press <ENT> to continue.
	To continue Press <ENT>	8. Press <ENT>.
ENT	CALIBRATION SOLUTION	9. Inject 120 ml of calibration solution (flush with 60 ml, then allow portion of second 60 ml to remain in flowcell). Press <ENT>.
ENT	CAL SOLUTION %: XX	10. If the number shown is between 1 and 10, wait for reading to stabilize, then press <*>. WAIT command will appear.
*	CAL SOLUTION %: XX <i>wait</i>	11. When finished, unit will prompt you to press <ENT> to continue.
	To continue Press <ENT>	12. Press <ENT>.
ENT	Press <1> to End Calibration	13. Press <1> to accept the new calibration settings. Unit returns to calibration menu. Open valve to start sample flow by returning lever to the vertical position. Calibration is finished.

APPENDIX E
AlgaeWatch TROUBLESHOOTING WORKSHEET

The Troubleshooting Worksheet is designed to facilitate diagnostic data collection. After collecting all data on the worksheet, most problems can be solved over the telephone. Refer to the Service Assistance/Returned Goods Section for the appropriate numbers.

Please fill out worksheet completely—All entries are important

GENERAL INFORMATION:

Unit Serial No.:_

(Tag is located beneath sample block.)

Field Contact Name:___

Field Contact Phone:___

Description of Symptoms: _

Date/Time Symptoms Started:___

Describe Any Physical Damage To Unit: _

Date Of Last Calibration:___

(Press <ENT> from HOME screen to read last calibration date.)

THE HOME SCREEN READS: _____ RFU

If "ALM" is blinking, press
 <ESC> and record alarms

PHYSICAL INSPECTION:

1. Is main power switch on?	<input type="checkbox"/> YES	<input type="checkbox"/> NO
2. Can LCD contrast be adjusted using the UP/DOWN arrows?	<input type="checkbox"/> YES	<input type="checkbox"/> NO
3. Date flowcell was last cleaned:	With Acid:	
	With Brush:	
4. Turn main power to the instrument off and remove enclosure face being careful to remove keypad ribbon cable from the circuit board. Tug each wire to the terminal strip to see if it is firmly connected.		

[AlgaeWatch TROUBLESHOOTING WORKSHEET]

**AlgaeWatch
RECORD SYSTEM VALUES**

ACCESS KEYS	SYSTEM VALUE	VALUE
<HOME> <0>	Cal Soln Value	_____
<HOME> <1>	Background Value	_____
<HOME> <2>	High Signal Alarm	_____
<HOME> <←>	Alarm History (list alarms)	_____ _____
<HOME> <⊕> <6>	AC Cycle Time	_____
<HOME> <⊕> <7>	AC On Time	_____
<HOME> <*>	Software Version	_____
<HOME> <*> <ENT>	Raw (Blank): FS %(Blank): Raw (Cal Std): FS %(Cal Std):	_____ _____ _____ _____
<HOME> <*> <ENT> <ENT> <1>	Does AC Relay A & B go off/on when <ENT> toggled?	_____
<HOME> <*> <ENT> <ENT> <ENT>	Oper. Hrs: Lamp: Flow:	_____ _____ _____
<HOME> <*><ENT><ENT><ENT><ENT>	Blank: Cal std:	_____ _____

Appendix F: FIGURES

Figure 3. AlgaeWatch Inlet Plumbing

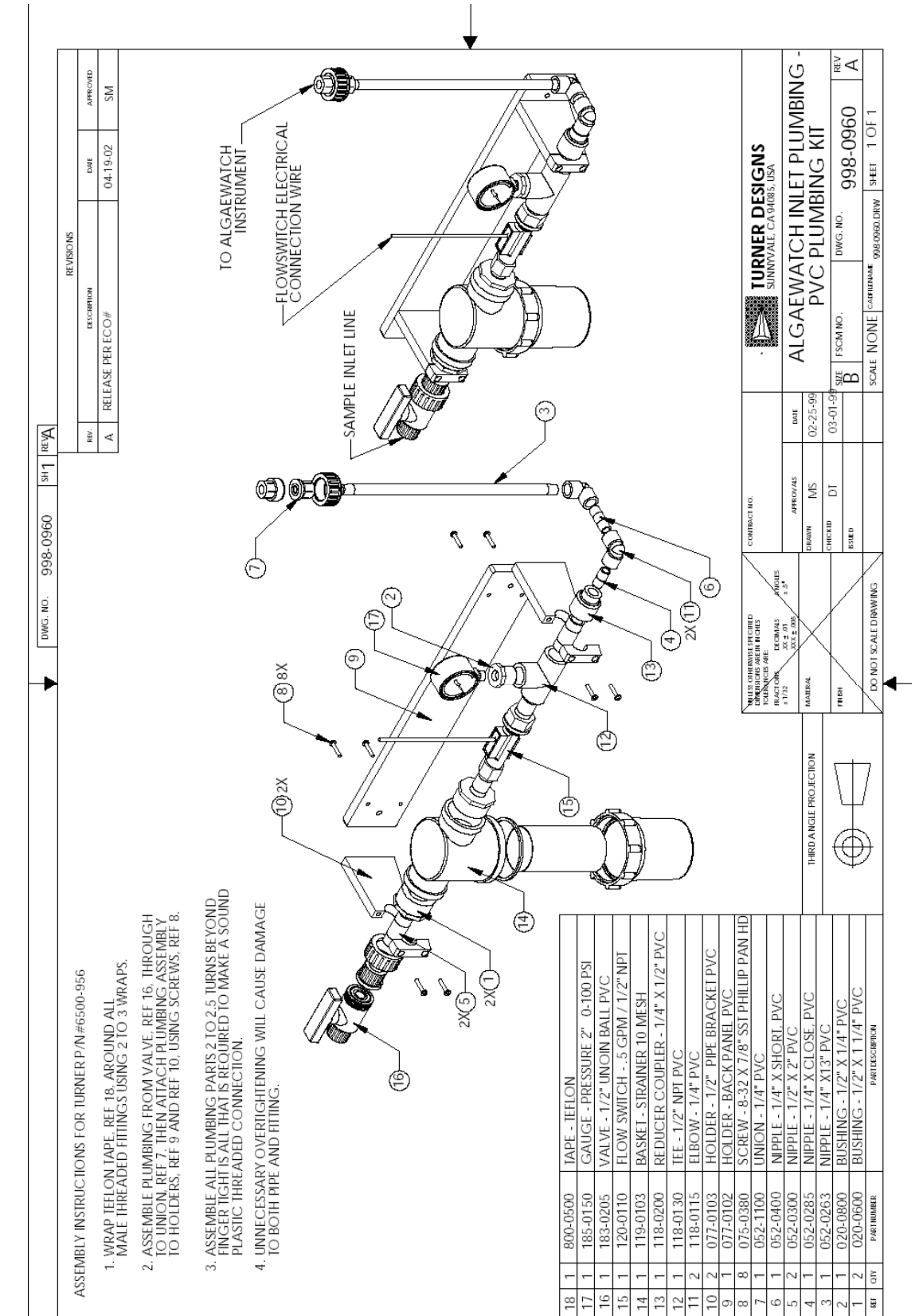


Figure 4. AlgaeWatch Outlet Plumbing

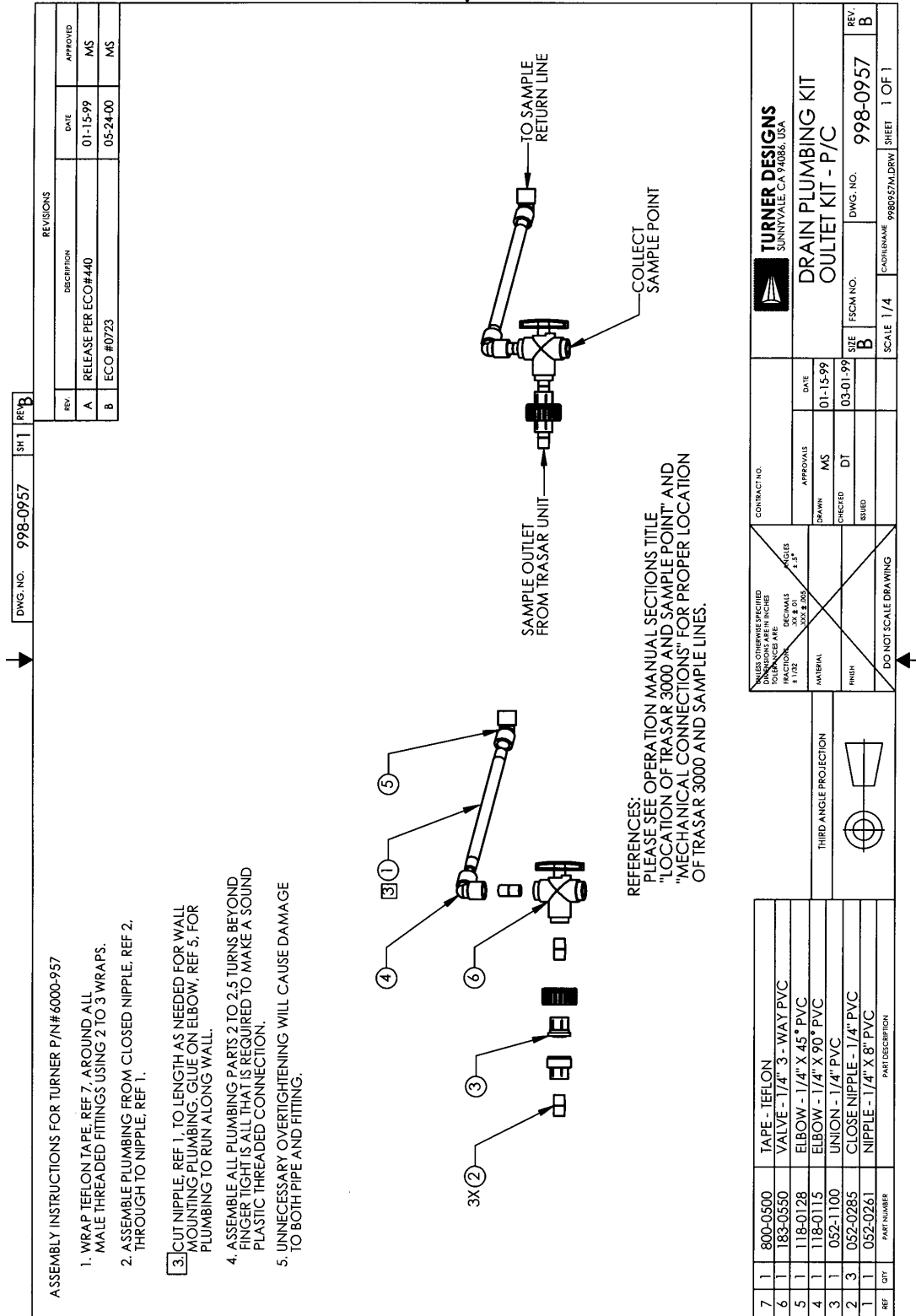
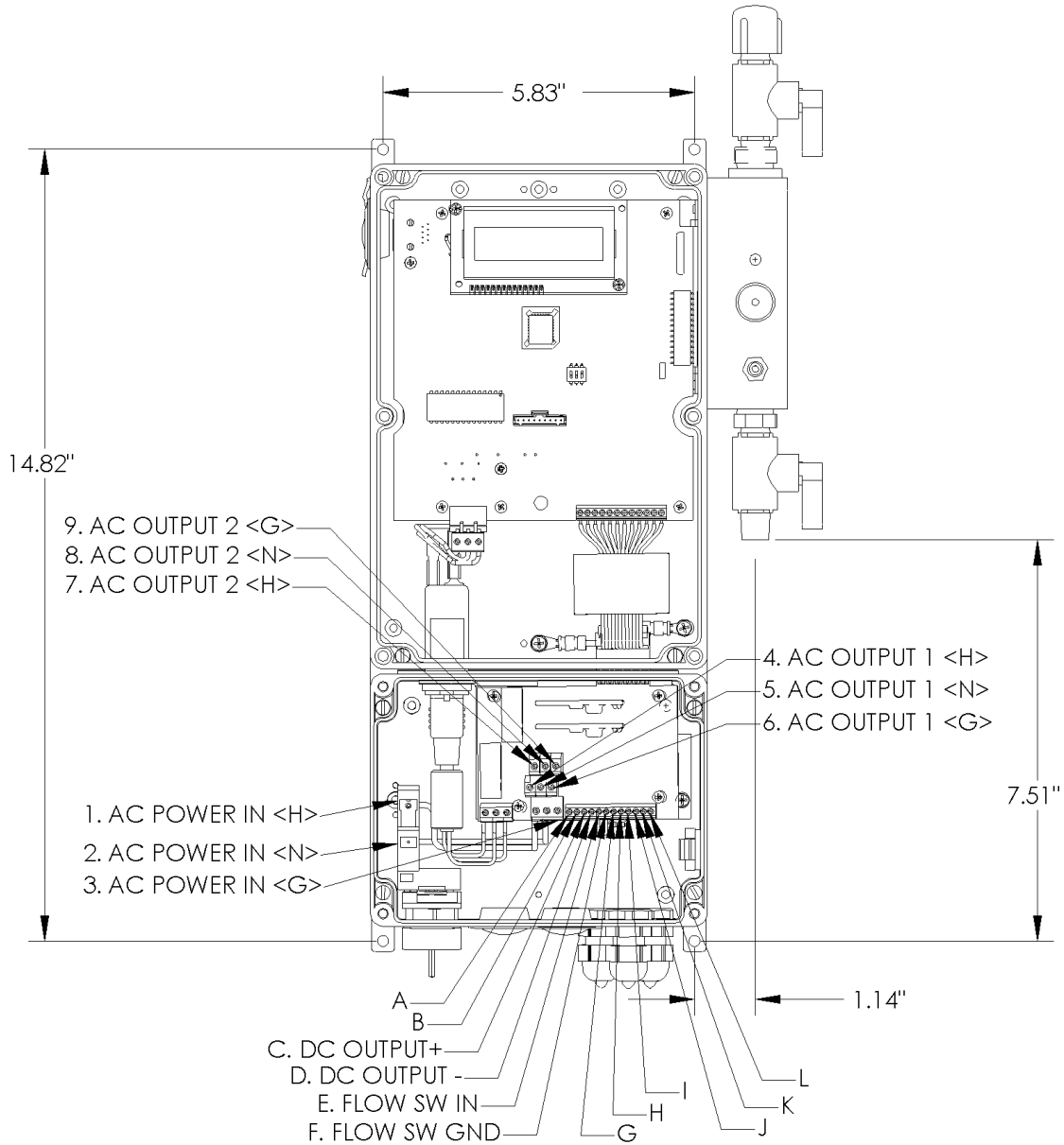


Figure 5. AlgaeWatch - Front View



AC CONNECTIONS

- 1. AC POWER IN <H>
- 2. AC POWER IN <N>
- 3. AC POWER IN <G>
- 4. AC OUTPUT 1 <H>
- 5. AC OUTPUT 1 <N>
- 6. AC OUTPUT 1 <G>
- 7. AC OUTPUT 2 <H>
- 8. AC OUTPUT 2 <N>
- 9. AC OUTPUT 2 <G>

I/O CONNECTIONS

- A. Reserved
- B. Reserved
- C. DC Output +
- D. DC Output -
- E. Flow Sw In
- F. Flow Sw GND
- G. Reserved
- H. Reserved
- I. Reserved
- J. Reserved
- K. Reserved
- L. Reserved

Dimensions are in inches

Figure 6. AlgaeWatch - Front View-External

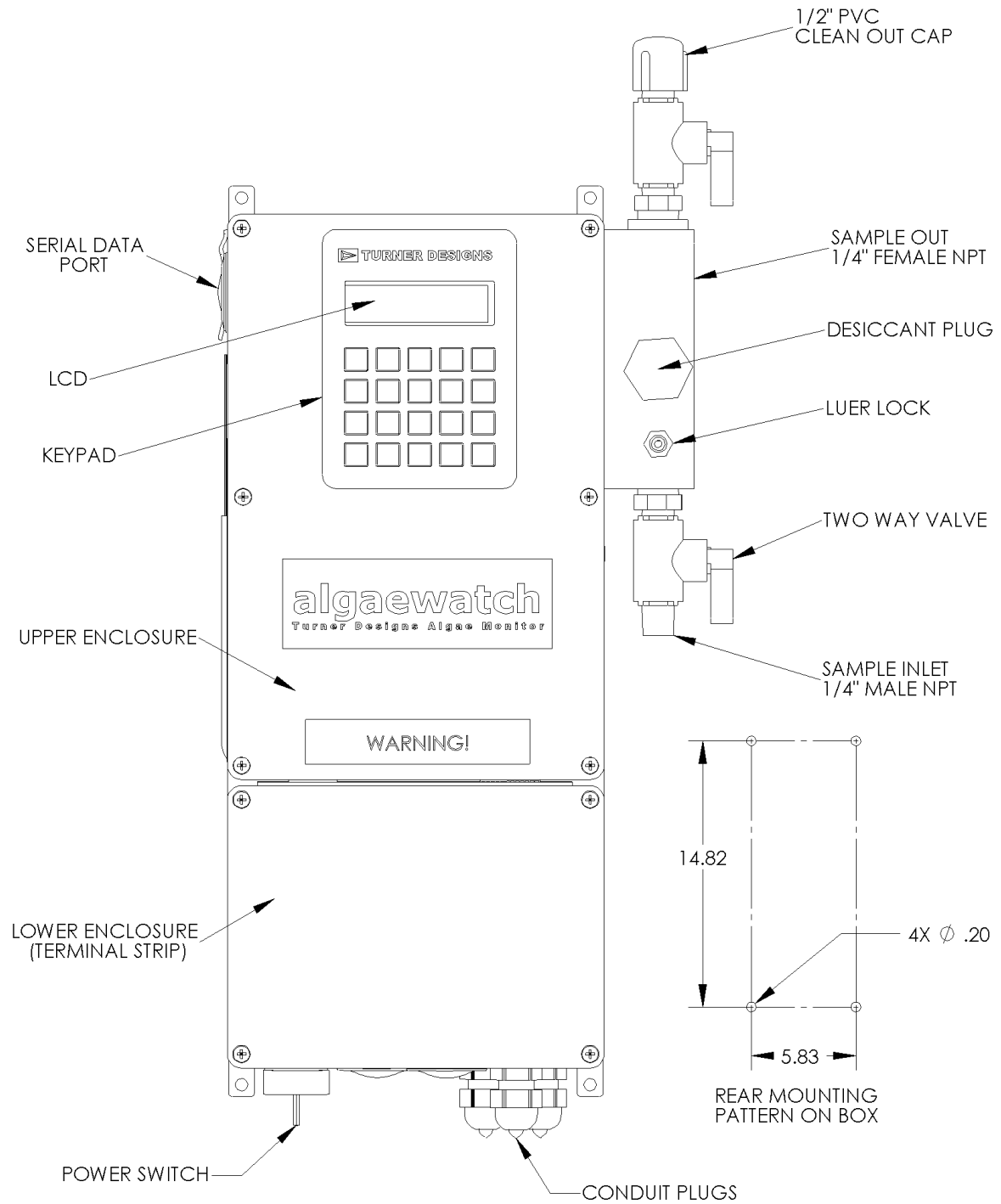


Figure 6. AlgaeWatch – Front View, External

Definitions:

1. **LCD Digital Display**—This liquid crystal display (LCD) shows the screens and continuously displays the HOME screen when values are not being entered or viewed.
 - ① Except during calibration, the contrast of the LCD can be adjusted on any screen by pressing the UP or DOWN ARROW.
2. **Keypad**—The keypad is used to enter new unit values and to move between screens.
 - ① Once the User or Master Identification has been entered, if the keypad is not used for 15 minutes, the unit will automatically return to the HOME screen.
3. **Main Power Switch**—This is the main power switch for the entire unit. When ON, the LCD will illuminate.
4. **AC Power Circuit Breakers**—There are two 3.15 amp circuit fuses located inside the lower enclosure. Two spare fuses are provided within the instrument enclosure.
5. **Inlet Line Shut-off Valve**—This valve is used to direct the sample flow to the unit. When the handle is vertical, the valve is open and sample flows into the unit. When the handle is horizontal, sample flow is stopped, permitting calibration solutions to be injected into the unit via the Luer-lock injection port.
6. **Luer-lock Injection Port**—During instrument calibration, standard and blank solutions are injected into the unit using a syringe at the Luer-lock connection adjacent the valve. The unit is calibrated using a secondary standard dilution and a blank solution (distilled water).
7. **Clean-out Cap**—This cap permits access to the flowcell for cleaning with a brush when flushing with acid alone is not effective
8. **Sample In**—This is where the sample intake line is attached, to allow sample to flow through the unit.
9. **Sample Out**—The sample exhaust line attaches here. There **MUST** be a valve at this point if there is backpressure on the line, which is open during normal operation. If there is back pressure on the line, close the valve during calibration; be aware that some solution will flush to the floor.
10. **Sample Block**—This houses the flowcell and optical filters. To change the flowcell or filters, the Sample Block must be replaced.
11. **Power Terminal Strip**—*Located behind the bottom enclosure front panel. Power, AC out, flow switch, and 4-20 mA chart recorder connections are made on this strip (see Figure 4, page 37). **Electrical connections should be made only by trained personnel.***

APPENDIX G

***In vivo* Chlorophyll: Concepts and Concerns**

In vivo chlorophyll analysis is the measurement of chlorophyll fluorescence within a living cell. The advantage of this type of analysis is that it is quick and simple and does not require special sample preparation or extraction. It allows the user to measure 100's to 1000's of samples a day in the field. However, without comparisons to extractive analysis, *in vivo* readings are qualitative in nature.

Research purposes include:

- Vertical and horizontal profiling of algal biomass
- Algae management for
 - Drinking water facilities
 - Fisheries and aquaculture
- Environmental impact and long term monitoring programs
- Mapping and tracking algal blooms
- Mixing and upwelling in natural waters

For questions such as:

- How are the algal populations distributed in the water column?
- Is there an algal bloom developing? Where is the bloom?
- Is the algal population increasing or decreasing over time?
- What are the effects of pollution on a natural event on the ecosystem?

Variation:

The following biological and environmental issues affect *in vivo* results:

1. Health of the organism

Healthy phytoplankton will fluoresce LESS per unit chlorophyll than a dying cell.

2. Light history of the organism

Cells recently in bright light conditions will fluoresce LESS per unit chlorophyll than those that are dark adapted.

3. Morphology of the cell

Composition and shape of the surrounding cellular material can interfere with the fluorescent signal.

4. Light adaptation of the cell

The amount of chlorophyll per cell can vary due to its light environment.

5. Turbidity

Can cause scattering or shading effects depending upon the chemical composition of the turbidity.

Basic Calibration Concepts:

1. Collect an average representative water sample from the body of water to be studied.
2. Blank the instrument. The best blank would be from the same water sample as the “standard” but filtered through a 0.45 um filter to remove the phytoplankton. DI water or artificial seawater can be fine substitutes if filtered sample water is not available.
3. Calibrate your fluorometer with this sample, giving it a relative value. Ex: 50 RFU (relative fluorescence units).
4. Read all other samples for relative increases or decreases in signal strength. To minimize light history effects, taking sample readings at approximately the same time each day is recommended, preferably at dawn.

Quantitative Analysis:

Using periodic extractive chl a analysis in conjunction with *in vivo* analysis can provide more quantitative results when relative information is not enough.

1. Calibrate the instrument as discussed above.
2. Proceed with study, filtering periodic *in vivo* samples for later extraction. We suggest anytime there are suspected or expected changes in the environment or water quality that you collect samples. You may find you will have different *in vivo* chl: extractive chl correlations for different field stations or for different times of the year. For best results, keep the collected sample cold and in the dark until you can filter them. Filter the samples as soon as possible (within a couple of hours of collection) and freeze.
3. At the exact time of sample collection note the *in vivo* chlorophyll fluorescence value of the particular sample and label.
4. In the lab, extract the collected *in vivo* samples as per the EPA 445.0 protocol and analyze your extracts with calibrated fluorometer or spectrophotometer. Determine the correlation between the extractive and *in vivo* data.

Instruments:

Turner Designs offers a complete line of versatile research instruments and field based monitoring instruments. Our research instruments can be used for both *in vivo* and extracted chlorophyll analysis as well as many other applications. Our monitoring instruments are designed to detect *in vivo* chlorophyll data as well as turbidity in some cases.

Research Instruments include:

10-AU Field Fluorometer
TD-700 Laboratory Fluorometer

Monitoring Instruments include:

SCUFA Submersible Fluorometer
Aquafluor Handheld Fluorometer
AlgaeWatch On-Line Fluorometer

CHLOROPHYLL ANALYSIS

Instrument	In vivo	extracted
10-AU	YES	YES
TD-700	YES	YES
SCUFA	YES	NO
Aquafluor I	YES	NO
Aquafluor III	NO	YES
AlgaeWatch	YES	NO

Standards:

Turner Designs also offers primary and secondary calibration standards for chlorophyll analysis. Our primary standards are pure chlorophyll *a* in 90% acetone. The concentration has already been determined and each standard comes with quality control data. The primary standards are available for fluorometers (P/N 10-850) and spectrophotometers (P/N 10-950).

Solid, secondary standards are also available for each instrument. The solid standard is made of a very stable fluorescent material that fluoresces at the same wavelengths as chlorophyll *a*. The standards can be used to quickly and easily check for instrument drift and to re-calibrate after an initial calibration with a primary standard.

Further information can be found on our website:

EPA link for 445.0 protocol:

<http://www.epa.gov/nerlcwww/ordmeth.htm>

SCUFA[®] manual and *Aquafluor*[™] manual

<http://www.turnerdesigns.com/t2/doc/manuals/main.html>

Effects of turbidity on *in vivo* chlorophyll fluorescence

http://www.turnerdesigns.com/t2/esci/turbidity_effects.html

Primary and Secondary Calibration Standards

http://www.turnerdesigns.com/t2/instruments/standards_main.html

Frequently Asked Questions and Fluorescence Tutorial

<http://www.turnerdesigns.com/t2/doc/tutorials/main.html>