

Trilogy Firmware Installation Instructions

This document provides instructions on how to install new firmware releases on the Turner Designs Trilogy Laboratory Fluorometer.

1. Click on the Trilogy Firmware Version 4.02 icon found on The Turner Designs website
<http://www.turnerdesigns.com/t2/sw/main.html>.

2. Step through the InstallShield Wizard steps (Figure 1) and select the Install button followed by the Finish button.

3. The Install Spreadsheet Interface Software and Firmware 4.02 will be automatically stored in
C:\Program Files\Turner Designs\Trilogy\

4. Connect the serial cable between your PC and the Trilogy. If the PC does not have a serial port available, use a USB to serial adapter.

5. Turn on the Trilogy then click on the **SIS for Trilogy** shortcut created on your desktop.

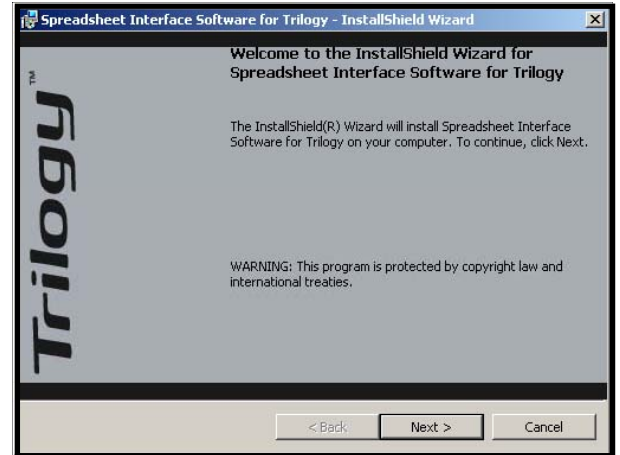


Figure 1

6. Click on the **Update Firmware** tab from the Utilities menu (Figure 3).

7. A window will display, "this update will take less than 4 minutes". Click "OK" to proceed click "Cancel" to return to the SIS interface screen.

8. You will be prompted to turn the Trilogy Off then On again. The update process will automatically begin (Figure 4). It will take a few moments before the status bar begins to move. The screen on the Trilogy will remain off at this time.

9. When the update is complete, you will be prompted to turn the Trilogy Off then On again. The new firmware has been loaded and the Trilogy is now ready for use.

****Turner Designs Technical support can be contacted for further assistance if required at support@turnerdesigns.com.***



Figure 3

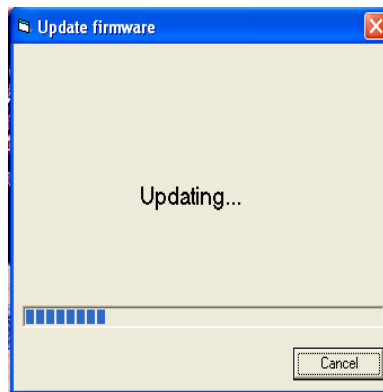


Figure 4

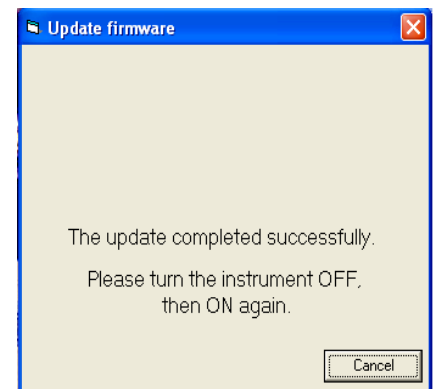


Figure 5